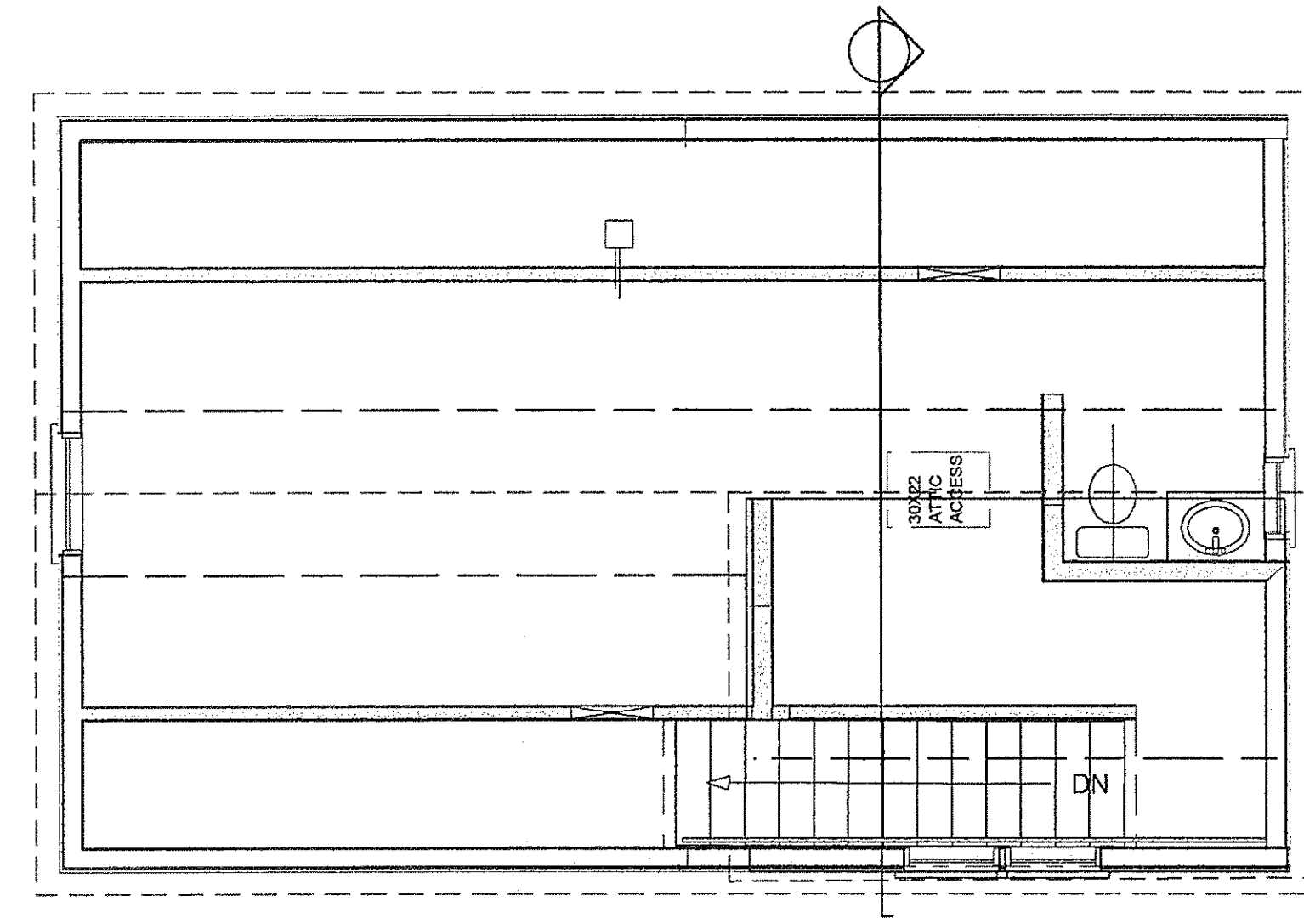
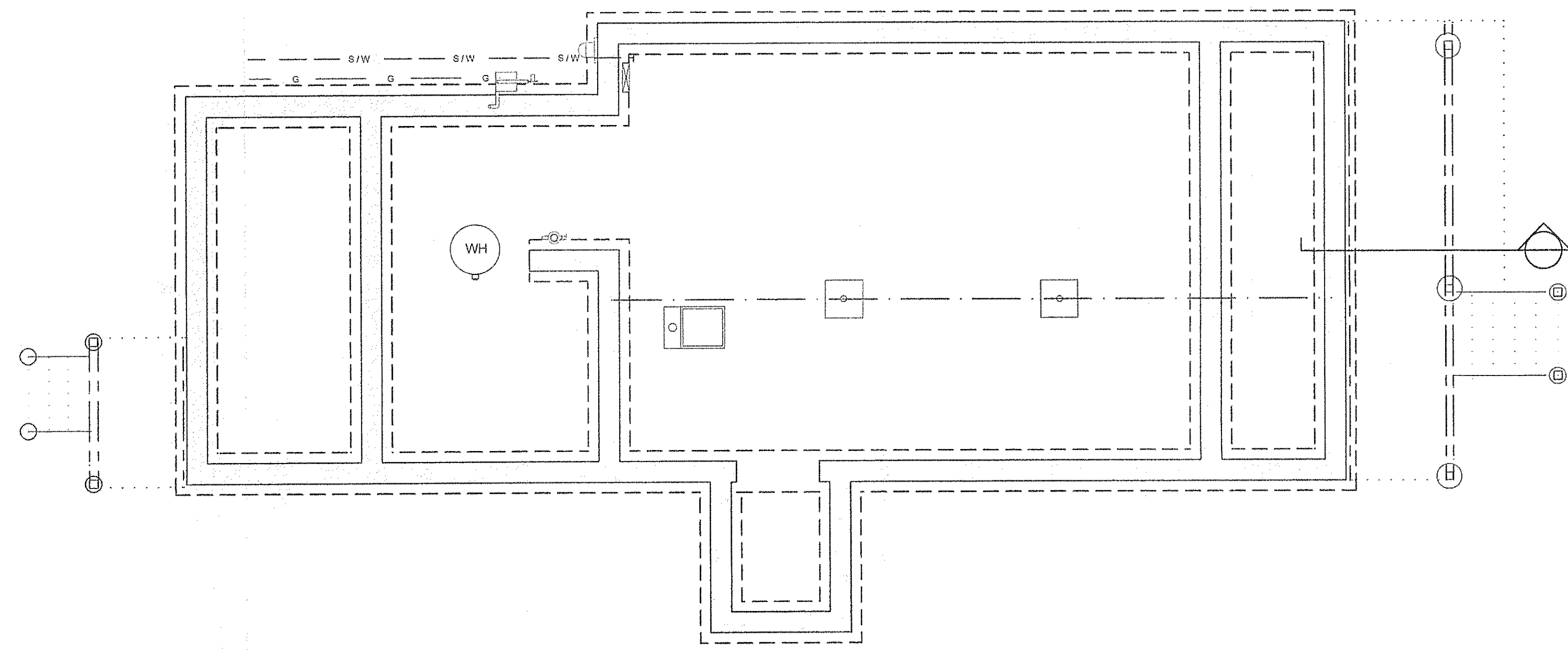


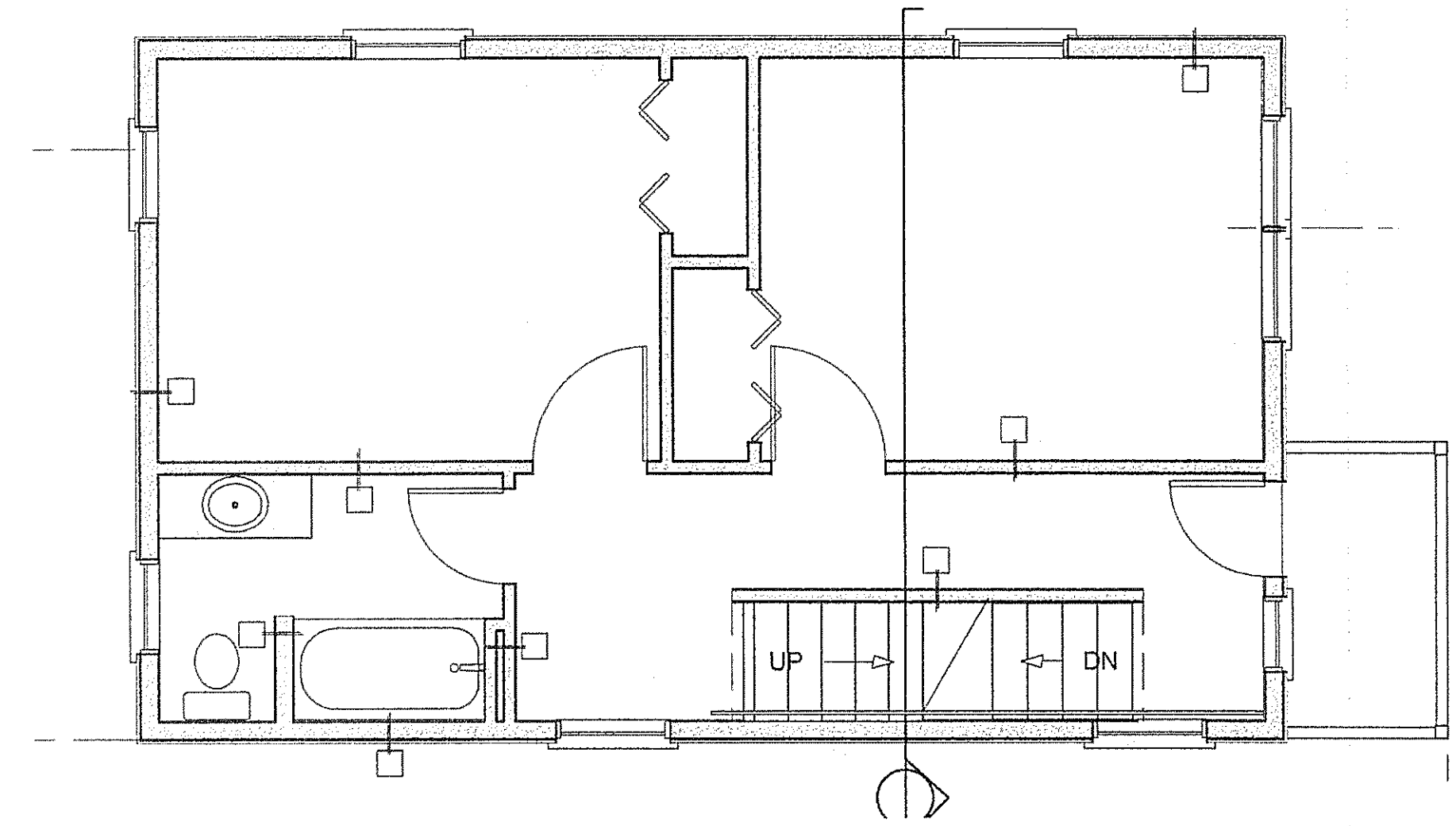
1 FIRST FLOOR PLAN
1/4" = 1' - 0"



2 THIRD FLOOR PLAN
1/4" = 1' - 0"



1 CELLAR FLOOR PLAN
1/4" = 1' - 0"



4 SECOND FLOOR PLAN
1/4" = 1' - 0"

REVISIONS:

JLG Designs, LLC
INTERIORS & BUILDING DESIGNS
Milford, Connecticut 06460
Phone: 203-876-2095
E-mail: jlg-design@juno.com
CT REGISTERED INTERIOR DESIGNER AND CT LICENSED BUILDING OFFICIAL

TOBIN RENOVATION
79 BOTSFORD AVENUE
MILFORD, CONNECTICUT

DRAWING No: **P - 2**
DATE: 01-28-2009
SCALE: AS NOTED

-1 1/2"