

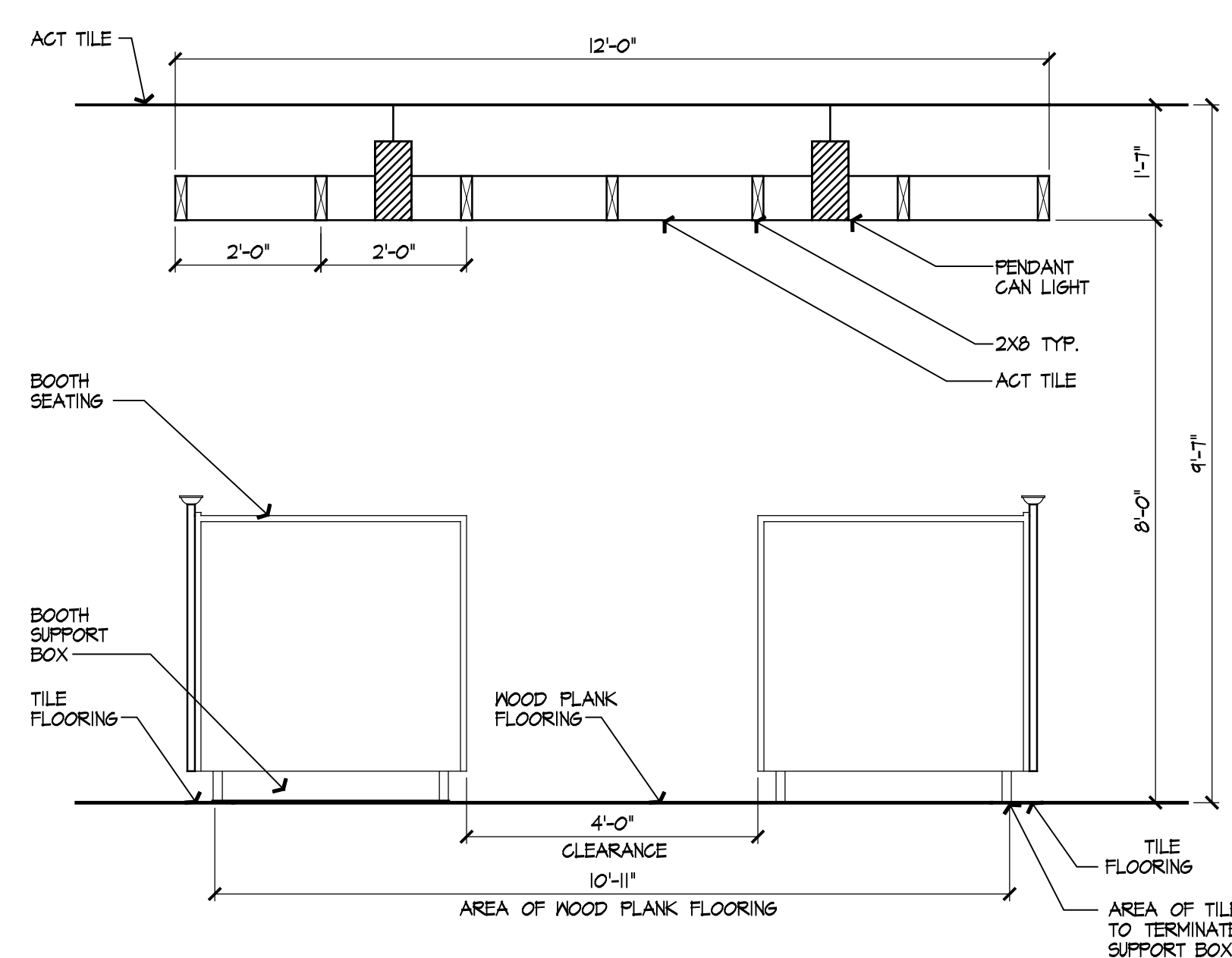
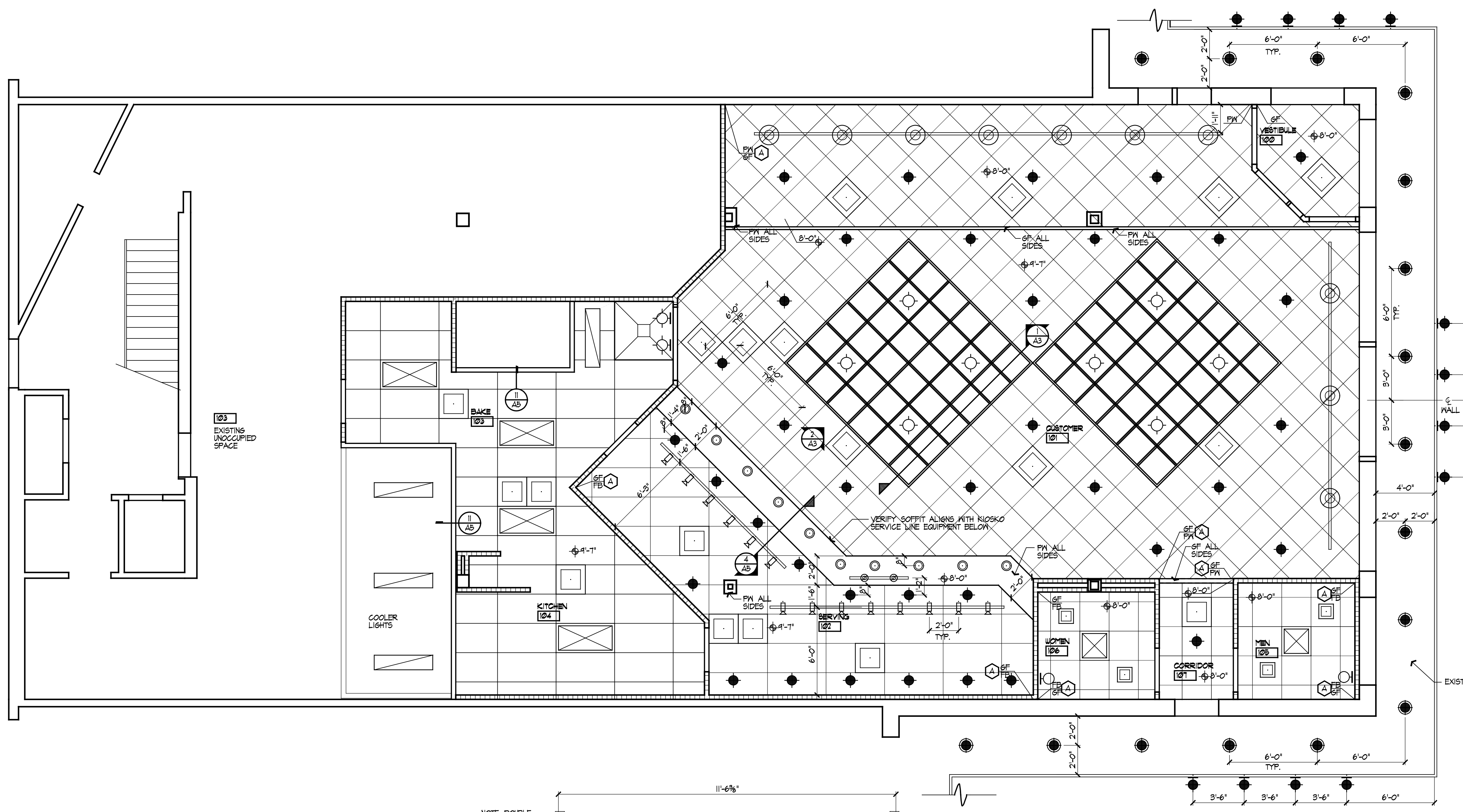
REFLECTED CEILING PLAN NOTES
SEE DWG. A1 FOR GENERAL NOTES APPLICABLE TO REFLECTED CEILING PLAN.
SEE ELECTRICAL DRAWINGS FOR LIGHTING CIRCUITS, SWITCHING AND LIGHT FIXTURE INFORMATION.
SEE MECHANICAL DRAWINGS FOR LOCATION AND SIZE OF HVAC EQUIPMENT.
SEE REFLECTED CEILING PLAN FOR LOCATION OF DIFFUSERS AND GRILLES.
CENTER EXIT SIGNS OVER DOOR OPENINGS, AND CEILING FIXTURES IN GRID SPACES WHERE POSSIBLE.

REFLECTED CEILING PLAN LEGEND

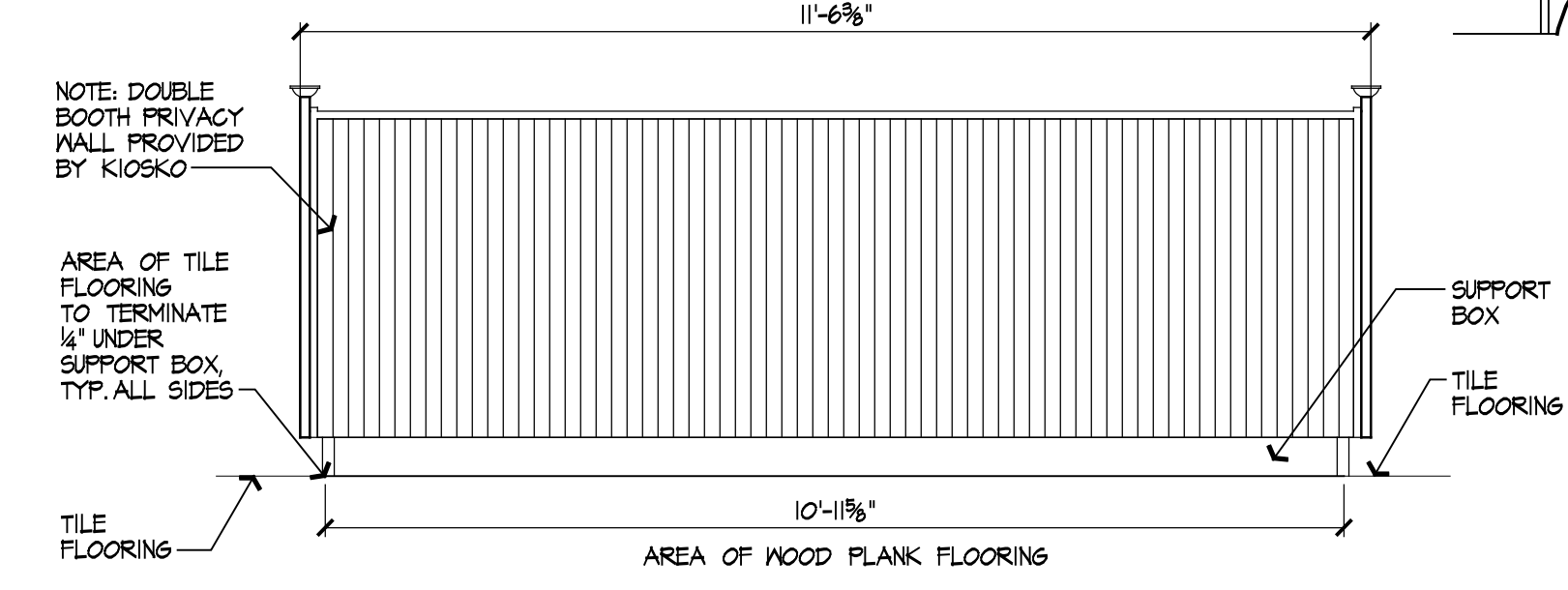
	RECESSED DOWNLIGHT
	EXTERIOR RECESSED DOWNLIGHT
	INCANDESCENT LOW-VOLTAGE DOWNLIGHT
	WALL MOUNTED SCONCE
	EXTERIOR GOOSENECK
	PENDANT DOWNLIGHT MOUNT BOT. AT 8'-0" AFF
	PENDANT LIGHT & TRACK, CENTER OVER TABLES, MOUNT AT 6'-0" AFF
	SMALL PENDANT LIGHT & TRACK MOUNT AT 6'-0" AFF
	TRACK HEAD & TRACK
	2x4 RECESSED FLUORESCENT
	2x2 RECESSED FLUORESCENT
	6'x4 STRIP FLUORESCENT
	HOOD INCANDESCENT LIGHT W/ ONE TYPE WATERPROOF ENCLOSURE
	1x4 SURFACE MTD FLUORESCENT
	WALL MTD. EXIT SIGN W/ EMERGENCY BATTERY POWER
	WALL MTD. EXIT SIGN W/ EMERGENCY BATTERY POWER PACK & EMERGENCY LIGHTS
	CEILING MTD SINGLE FACE, EXIT SIGN W/ EMERGENCY BATTERY POWER PACK
	EMERGENCY LIGHTS W/ EMERGENCY BATTERY BACKUP
	2x2 CEILING DIFFUSER
	1x1 CEILING DIFFUSER
	2 x 4 ACT W/ SCORED TILE SEE FINISH SCHEDULE (ACT 1)
	2 x 4 ACT SEE FINISH SCHEDULE (ACT 2)

FINISH SCHEDULE NOTES
SEE DWG. A1 FOR GENERAL NOTES APPLICABLE TO REFLECTED CEILING PLAN.
SEE FLOOR PLAN(S) FOR LOCATION OF CHANGES IN FLOORING MATERIAL.

FINISH SCHEDULE KEY
EXIST - EXISTING
ACT 1 - ARMSTRONG #1761 SECOND LOOK 11 24"x48", COLOR: HAZE.
SCORED 24"x24", ARMSTRONG PRELUDE GRID 24"x48", COLOR: HAZE.
ACT 2 - USG #3210 GLASS A LAY IN PANEL DOWN ZXA ENVIRONMENTAL GRID
FF - FACTORY FINISH
FRP 1 - KEMLITE FIRE-X GLASSBOARD GLASS "A" (0.090) WITH ACCESSORY MOULDINGS.
INSTALL PANELS FROM FLOOR TO CEILING WITH NO HORIZONTAL SEAMS, GLUED AND SEALED PER MANUFACTURERS SPEC. WHITE 305 WITH EMBOSSED TEXTURE FINISH. OMIT BEHIND OVEN AND COOLER. SEE PLAN FOR LOCATIONS.
FRP 2 - FRP MANGOCOT MARLITE "SYMMETRIX" C-1005-644 WHITE PANELS WITH 4"x4" SCORED PATTERN. ATTACH TO GMB SUBSTRATE PER MANUFACTURERS SPECIFICATIONS.
GROUT 1 - LATICRETE #35 MOCHA
GROUT 2 - LATICRETE #35 MOCHA EPOXY GROUT
GMB - GYPSUM WALL BOARD
POLY - POLYURETHANE CLEARCOAT
SS 1 - STAINLESS STEEL #3 FINISH, 18 GA. 304 PANELS TO BE VERTICAL FULL HEIGHT WITH NO HORIZONTAL SEAMS. JOINTS TO BE COVERED WITH STAINLESS STEEL BATTENS. PROVIDE STAINLESS STEEL CLOSURE ANGLES AND STAINLESS STEEL DRIP EDGE AT B/O EDGE OVER TILE BASE BELOW. INSTALL OVER 5/8" FIRE RATED PLYWOOD WITH RH STAINLESS STEEL SCREWS. SEE PLAN FOR LOCATION.
TILE 1 - AMERICAN OLEAN "QUARRY NATURALS" TILE 6' x 6', COLOR: DESERT #3
TILE 2 - ILVA "OXIDE" TILE 14' x 14', COLOR: YTRIUM
TILE 3 - ILVA "OXIDE" TILE 1' x 1', COLOR: TIN. GAP W/ ZOCALO TILE 3/4" x 1/4", COLOR: TIN
TILE 4 - AMERICAN OLEAN "QUARRY NATURALS" COVE BASE, COLOR: DESERT #3
TILE 5 - ILVA "OXIDE" ZOCALO TILE 3/4" x 1/4", COLOR: YTRIUM
TILE 6 - DALTILE "PARAISO" GLAZED PORCELAIN COVE BASE 5-364T 6'x18", COLOR: CAIENNA P552.
WOOD PLANK - GAMMAPAR ENGINEERED STRIP & PLANK FLOORING, OLYMPIA COLLECTION, SPECIES: CHERRY, 2 2/8" WIDTH, 1/8" SIDES & ENDS, MICRO BEVEL EDGES, COLOR: NATURAL, FINISH: UV, PROVIDE & INSTALL UNDERLAYMENT PER MFR'S RECOMMENDATIONS, FINISH FLOOR ELEV. TO ALIGN WITH ADJACENT TILE.



1 DROP DOWN CEILING
SCALE: 1/2" = 1'-0"



2 PRIVACY WALL ELEVATION
SCALE: 1/2" = 1'-0"

PAIN T SCHEDULE MANUFACTURER: SHERWIN WILLIAMS

SYM.	NUMBER	COLOR	FINISH	REMARKS
FW	SW6344	PENNYWISE	EGGSHELL	
FB	SW6405	FERVENT BRASS	EGGSHELL	
GF	SW6388	GOLDEN FLEECE	EGGSHELL	
UM	SW6146	UMBER	EGGSHELL	
CN		CEILING WHITE	FLAT	
TB	SW6258	TRICORN BLACK	SATIN	SEE DOOR SCHEDULE
RO	SW2815	RENWICK OLIVE	SATIN	
MS	SW6130	MANNERED GOLD	SATIN	
RS	SW6128	BLONDE	SATIN	

FINISH SCHEDULE

ROOM	FLOOR	WALLS	CEILING	BASE	REMARKS					
NUM.	NAME	MATL.	FINISH	MATL.	FINISH	MATL.	FINISH	MATL.	FINISH	REMARKS
100	VESTIBULE	TILE 2 GROUT 1	---	GLASS ALUMINUM	---	GMB PAINT (CN)	---	ALUMINUM FF	---	SCHLUTER EDGE PROTECTION "AEB" AT EXTERIOR DOOR THRESHOLD
101	CUSTOMER	TILE 2-GROUT 1 WOOD PLANK	---	GMB CHAIR RAIL	PAINT "HONEY" STAIN, POLY	ACT 1	---	TILE 5 GROUT 1	---	PROVIDE CHAIR RAIL IN SEATING AREA
102	SERVING	TILE 1 GROUT 1	---	GMB FRP 2	PAINT ---	ACT 2	VINYL COATED	TILE 4 GROUT 1	---	
103	BAKE	TILE 1 GROUT 2	---	SS 1	---	ACT 2	VINYL COATED	TILE 4 GROUT 2	---	
104	KITCHEN	TILE 1 GROUT 1	---	FRP 1	---	ACT 2	VINYL COATED	TILE 4 GROUT 1	---	SCHLUTER EDGE PROTECTION "AE" BETWEEN TILE 1 AND TILE 2 AT EXPOSED AREAS.
105	MEN	TILE 2 GROUT 1	---	GMB TILE 3/GROUT 1	PAINT ---	ACT 2	VINYL COATED	TILE 6 ---	---	
106	WOMEN	TILE 2 GROUT 1	---	GMB TILE 3/GROUT 1	PAINT ---	ACT 2	VINYL COATED	TILE 6 ---	---	
107	CORRIDOR	TILE 2 GROUT 1	---	GMB	PAINT ---	ACT 1	---	TILE 5 GROUT 1	---	SCHLUTER EDGE PROTECTION "AEB" AT EXTERIOR DOOR THRESHOLD